

Take a look inside..



Welcome to the UHDB Medical Museum!

We hope you find this booklet gives you a flavour of the amazing objects we have in our collection that tells the story of the heritage of our NHS trust.

The objects have lots of stories to tell, about the buildings and the people that have all had a part to play in UHDB hospitals.

We hope you enjoy the read and the puzzles too and please do look out for the display cabinets and exhibitions across our sites where you can see more of the collection.

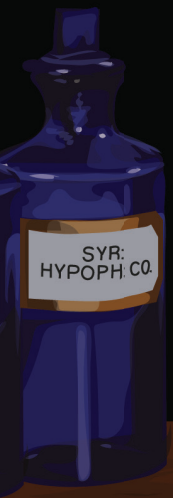
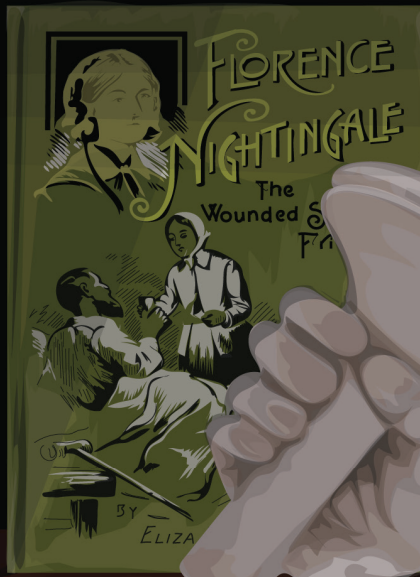
You can find more information about the UHDB Medical Museum project on the back page of this booklet.

Some of our Museum volunteers taking part in training with some of our collection objects.



Objects being used by patients at Queen's Hospital Burton.





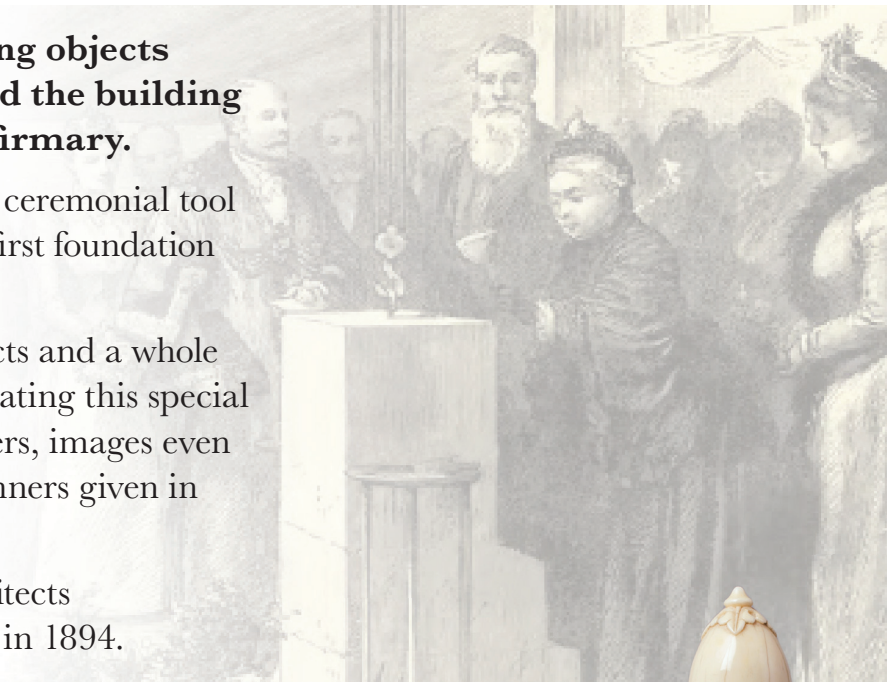
Queen Victoria & The DRI

Some of our most fascinating objects relate to Queen Victoria and the building of the Derbyshire Royal Infirmary.

In 1891, Queen Victoria used a ceremonial tool and silver spirit level to lay the first foundation stones of the new hospital.

We still have both of these objects and a whole array of other items commemorating this special event. These include cups, posters, images even the menus of the ceremonial dinners given in Queen Victoria's honour!

The DRI was designed by architects Young and Hall and completed in 1894.



The ceremonial stonemasons hammer used by Queen Victoria on laying the foundation stone of the Derbyshire Royal Infirmary in 1891.

Engraved with the following;

“

This was used by Her Majesty Queen Victoria on laying the Foundation Stone of the Derby Infirmary - May 21 1891

”

This spirit level, used by Queen Victoria has the following inscription engraved;

“

This was used by Her Majesty Queen Victoria May 21st 1891 to lay the foundation stone of the Derbyshire Royal Infirmary. Also by the Duke of Devonshire. April 26 1892 to lay the foundation stone of the New St Werburghs Church, Derby

”





The Lady with the Lamp

A chromolithograph by Cassel & Co based on the "Miss Nightingale at Scutari" painting by Henrietta Rae (1891).

Our Florrie: Florence Nightingale

Florence Nightingale has very special links to both Derbyshire and the UHDB Trust.

Florence was born in 1820 and her family had a home in North Derbyshire.

She was a pioneer in her ideas for nursing and was also a very clever statistician. Florence was instrumental in the building of the Derbyshire Royal Infirmary, giving advice on ventilation and other aspects of ward building.

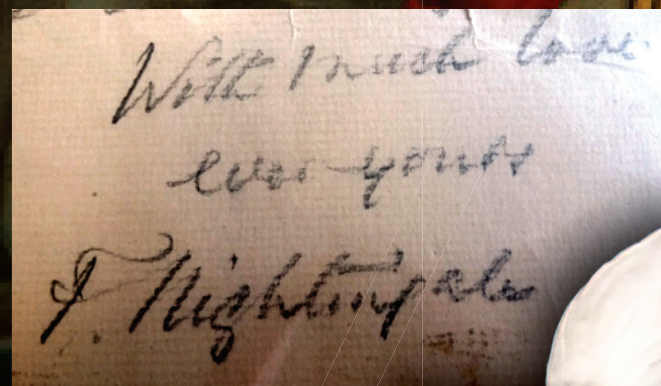
Florence's warmth also extended to animals - she had a pet owl whom she had rescued and nursed called Athena.

The NHS still follows her ideas for nursing today. Our Florence Nightingale collection contain some of our most popular objects, which include a lithograph, telegrams and her autograph.

"With much love ever yours F.Nightingale"

The hand formed part of the statue that stands in a pedestal at the centre of a concave stone bay in front of the ground of the Derbyshire Royal Infirmary.

The statue was designed in 1914 by Countess Feodora Gleichen who was related to Queen Victoria and was the first woman member of the Royal Society of British Sculptors.





Objects, objects, objects...

We have a really broad range of different types of objects in our collection.

Some tell us about our hospital buildings, some tell us about the people who worked in our hospitals and some tell us about how patients are looked after in our hospitals. These include medical tools, apothecary items, photographs, medals and books.

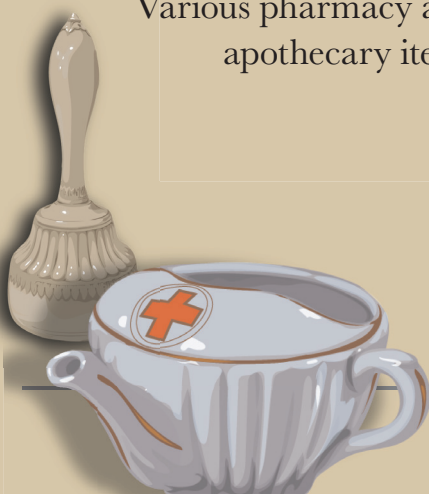
One of our favourites is this very large poison bottle. ▶

Years ago it was easy to make a mistake in hospitals and pick up the wrong bottle, sometimes with disastrous results! So they had special glass bottles made embossed with patterns and the word 'Poison' to reduce this kind of mistake.

A photograph from the 1920's showing women waiting for visiting hours to begin at the DRI ▼



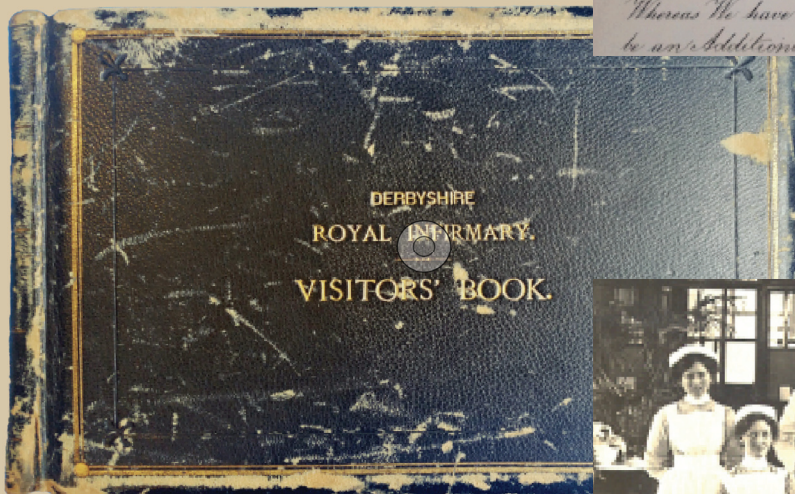
Various pharmacy and apothecary items ▶





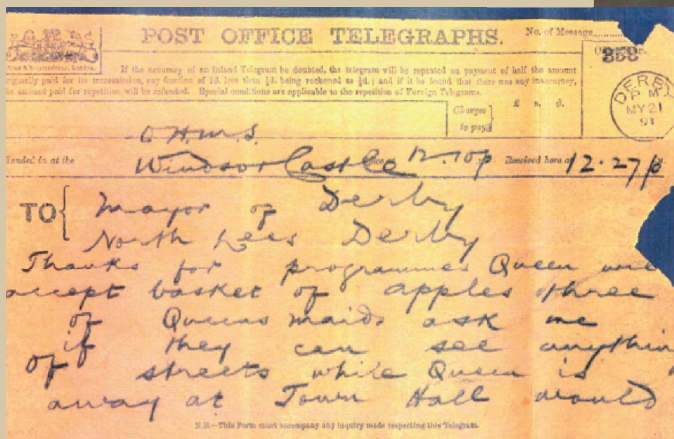
◀ Military Medals Awarded for nursing to Ethel Hutchings A.R.R.C

▶ Order of the British Empire (OBE) Awarded to Ethel Ellen Hutchings



◀ DRI visitors book, with signatures of Queen Victoria and Queen Elizabeth II

▶ Picture of a ward at the DRI



◀ Telegram from Queen Victoria's private secretary

▶ The Derby Royal Infirmary from London Road, c.1900



Derby Hospital & The Strutts



Framed oil painting of the Derbyshire General Infirmary (also known as the William Strutt Infirmary). Artist unknown.

UHDB hospitals are really special.

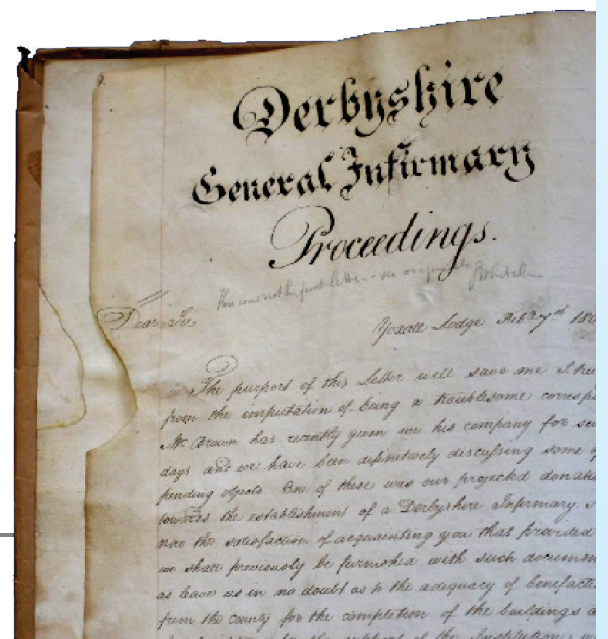
Joseph and William Strutt, two of the people who raised the money to build the first Derby Hospital, The Derbyshire General Infirmary in 1810 also built the cotton mills in the Derwent Valley. Some of those mills are now part of the Derwent Valley Mills World Heritage Site.

Also, for the first time in hospital design in Britain, cutting edge techniques of fireproofing and heating were used, the same that were used in the building of textile mills. These allowed the patients to breath fresh heated air while cold air was channelled up a glass and iron dome.

We are the only NHS Trust in the UK who has such a connection to a World Heritage Site. We have a number of wonderful objects in our collection that charts this remarkable link including oil paintings, map, books and records.

A proceedings book from the Derbyshire General Infirmary Committee from 1803-1816 is of immense historical significance. It includes details of advertising for tenders to be submitted for the design of the infirmary.

It details the need for a day room where patients may spend time away from their ward beds and a ‘fever ward’ and isolation area to remove people from the community who may “...in all probability preserve them (the community) from destruction.”



Burton & The Workhouse

Our trust is made up of five different hospitals and we have objects from our Staffordshire sites too.

Queen's Hospital Burton is on the site of the Belvedere Workhouse designed by JH Morton and built in 1880 -1884. It then went through a series of changes and redevelopments including an infirmary being added on. In 1948 what at the time was Burton Public Assistance Institution joined the NHS and became the Burton District Hospital.

A new building was opened by HRH Queen Elizabeth II in 1995 and in 1996 the hospital was renamed Queen's Hospital Burton in her honour.

We have some interesting objects from Queen's hospital including photographs, medical instruments even a display cabinet from the former "Graduate Medical Centre" which is now on display in the Library and Knowledge Service at Royal Derby Hospital.



In 1869, the original Burton Hospital was opened in Duke Street.

The Infirmary had just twenty-two beds, together with accommodation for nurses, domestics and the house surgeon. A second infirmary was opened 30 years later, complete with 72 beds.

Though of modest appearance, it contained every modern development of its day, including new casualty, outpatient and dispensary facilities.

In 1942, during the World War II, Burton's third infirmary was opened. The war restricted both facilities and staffing. Newly qualified doctors were allowed just six months in hospital before being called into war action.



Activities

COLOUR ME IN



WORDSEARCH

Z W O Q Z K L K Q U E E N V A
Z O G L K W R P B W N U R S E
N S T X A I R O T C I V D L C
I R Z K F O B J E C T G W T Y
M M W O R K H O U S E Z N M E
F E M D Y I N F I R M A R Y N
P D X E Y R A C E H T O P A D
M A K F D T T U R T S D V E I
E L S S S A L G G I L V I I K
D S D S X W D V M O B R M K B
I A L A T I P S O H R U J J O
C S Z S X B C S M O L O T G T
A A L J N O T E L E K S J P T
L U R N W L G F C C Y B I M L
W K F J A A N E H T A J X Z E

FLORRIE

QUEEN

VICTORIA

APOTHECARY

MEDALS

INFIRMARY

ATHENA

STRUTT

NURSE

GLASS

HOSPITAL

MEDICAL

OBJECT

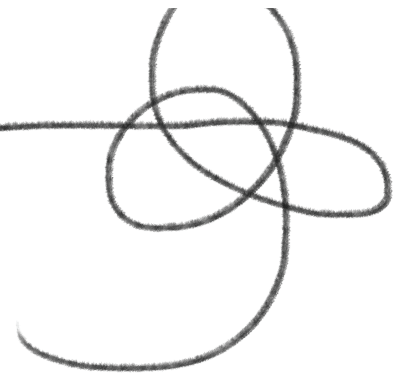
KIDNEY

BOTTLE

SKELETON

WORKHOUSE

Space to doodle...



Thanks for reading the booklet and we hope you have enjoyed it!

Making this booklet is part of the UHDB Medical Museum project.

The Medical museum is a joint venture between Air Arts and UHDB library service, which aims to care for the heritage of UHDB Hospitals and make it accessible for people to learn from, to research, to increase their wellbeing and inspire creativity.

The project includes fascinating exhibitions, workshops for patients and staff, conservation work, volunteering, artist creations and research events. It has been made possible by funding from National Lottery Heritage Fund and Derby & Burton Hospitals Charity.



www.uhdbllibrary.co.uk
uhdbmedicalmuseum.wixsite.com/my-site

For more info about the collection
contact beth.rawson@nhs.net

For more info about exhibitions & engagement
contact emma.bailey25@nhs.net

